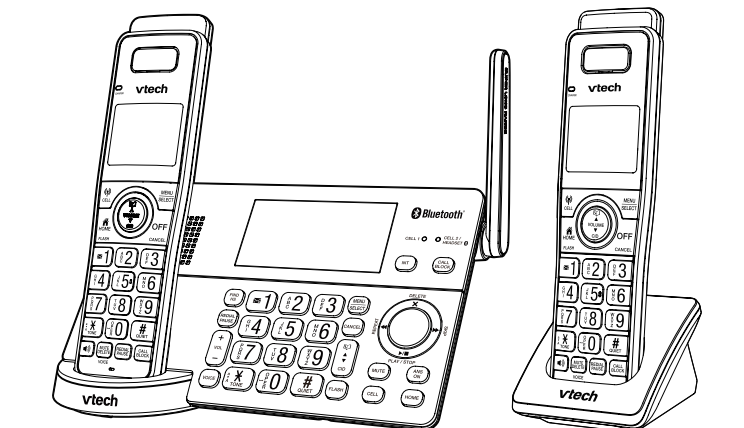


Go to www.vtechphones.com to register your product for enhanced warranty support and latest VTech product news.

DECT 6.0 cordless telephone with **BLUETOOTH®** wireless technology



vtech®
Quick start guide

For more support information

Technical specifications

Frequency control	Crystal controlled PLL synthesizer
Transmit frequency	Handset: 1921.536-1928.448 MHz Telephone base: 1921.536-1928.448 MHz
Channels	5
Nominal effective range	Maximum power allowed by FCC and IC
	Actual operating range may vary according to environmental conditions at the time of use.
Power requirement	Handset: 2.4V Ni-MH battery Telephone base: 6V DC @ 600mA Charger: 6V DC @ 400mA
Memory	Phonebook: 1000 memory locations; up to 30 digits and 15 characters
	Caller ID: 50 memory locations; up to 24 digits and 15 characters
Call block: 1000 entries	

The Bluetooth® word mark and logos are owned by Bluetooth SIG, Inc. and any use of such marks by VTech is under license from Bluetooth SIG, Inc. Other trademarks and trade names are those of their respective owners.

The Bluetooth® word mark and logos are owned by Bluetooth SIG, Inc. and any use of such marks by VTech is under license from Bluetooth SIG, Inc. Other trademarks and trade names are those of their respective owners.

The ENERGY STAR® program (www.energystar.gov) recognizes and encourages the use of products that save energy and help protect our environment. We are proud to mark this product with the ENERGY STAR label indicating it meets the latest energy efficiency guidelines.

The TELECOM INDUSTRY ASSOCIATION (TIA) 1083 Compliant Logo is a trademark of the Telecommunications Industry Association. Used under license.

IMPORTANT SAFETY INSTRUCTIONS

- When using your telephone equipment, basic safety precautions should always be followed to reduce the risk of fire, electric shock and injury, including the following:
- Read and understand all instructions.
 - Follow all warnings and instructions marked on the product.
 - Unplug this product from the wall outlet before cleaning. Do not use liquid or aerosol cleaners. Use a damp cloth for cleaning.
 - CAUTION:** Do not install the telephone base at a height above 2 meters.
 - Do not use this product near water such as near a bath tub, wash bowl, kitchen sink, laundry tub, or a swimming pool, or in a wet basement or shower.
 - Do not place this product on an unstable table, shelf, stand or other unstable surfaces.
 - Avoid placing the telephone system in places with excessive temperature, direct sunlight, or other electrical devices. Protect your phone from moisture, dust, corrosive liquids and fumes.
 - Slots and openings in the back or bottom of the telephone base and handset are provided for ventilation. To protect them from overheating, these openings must not be blocked by placing the product on a soft surface such as a bed, sofa or rug. This product should never be placed near or over a radiator or heat register. This product should not be placed in any area where proper ventilation is not provided.
 - This product should be operated only from the type of power source indicated on the marking label. If you are not sure of the type of power supply in your home or office, consult your dealer or local power company.
 - Do not allow anything to rest on the power cord. Do not install this product where the cord may be walked on.
 - Never push objects of any kind into this product through the slots in the telephone base or handset because they may touch dangerous voltage points or create a short circuit. Never spill liquid of any kind on the product.
 - To reduce the risk of electric shock, do not disassemble this product, but take it to an authorized service facility. Opening or removing parts of the telephone base or handset other than specified access doors may expose you to dangerous voltages or other risks. Incorrect reassembling can cause electric shock when the product is subsequently used.
 - Do not overload wall outlets and extension cords.
 - Unplug this product from the wall outlet and refer servicing to an authorized service facility under the following conditions:
 - When the power supply cord or plug is damaged or frayed.
 - If liquid has been spilled onto the product.
 - If the product has been exposed to rain or water.
 - If the product does not operate normally by following the operating instructions. Adjust only those controls that are covered by the operation instructions. Improper adjustment of other controls may result in damage and often requires extensive work by an authorized technician to restore the product to normal operation.
 - If the product has been dropped and the telephone base and/or handset has been damaged.
 - If the product exhibits a distinct change in performance.
 - Avoid using a telephone (other than cordless) during an electrical storm. There is a remote risk of electric shock from lightning.
 - Do not use the telephone to report a gas leak in the vicinity of the leak. Under certain circumstances, a spark may be created when the adapter is plugged into the power outlet, or when the handset is replaced in its cradle. This is a common event associated with the closing of any electrical circuit. The user should not plug the phone into a power outlet, and should not put a charged handset into the cradle, if the phone is located in an environment containing concentrations of flammable or flame-supporting gases, unless there is adequate ventilation. A spark in such an environment could create a fire or explosion. Such environments might include: medical use of oxygen without adequate ventilation; industrial gases (cleaning solvents; gasoline vapors, etc.); a leak of natural gas; etc.
 - Only put the handset of your telephone next to your ear when it is in normal talk mode. The power adapter is intended to be correctly oriented in a vertical or floor mount position. The prongs are not designed to hold the plug in place if it is plugged into a ceiling, under-the-table or cabinet outlet.

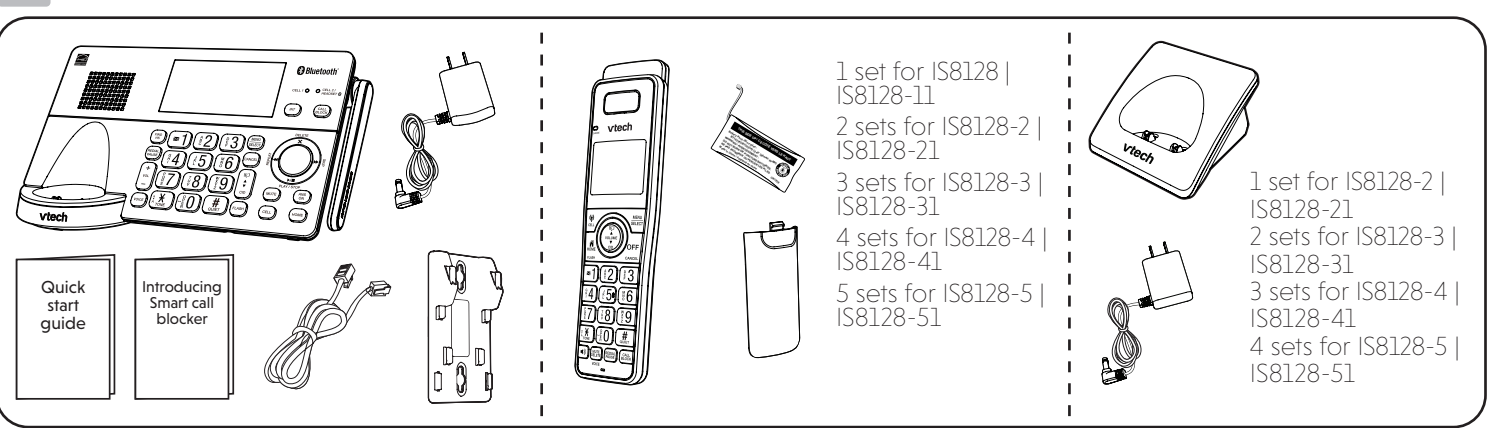
SAVE THESE INSTRUCTIONS

- Battery**
- Use only the batteries provided or equivalent. To order a replacement, visit our website at www.vtechphones.com or call 1 (800) 595-9511. In Canada, go to phones.vtechcanada.com or call 1 (800) 267-7377.
 - Do not dispose of the battery in a fire. Check with local waste management codes for special disposal instructions.
 - Do not open or mutilate the battery. Released electrolyte is corrosive and may cause burns or injury to the eyes or skin. The electrolyte may be toxic if swallowed.
 - Exercise care in handling batteries in order not to create a short circuit with conductive materials.
 - Charge the battery provided with this product only in accordance with the instructions and limitations specified in this manual.

Precautions for users of implanted cardiac pacemakers
Cardiac pacemakers (applies only to digital cordless telephones): Wireless Technology Research, LLC (WTR), an independent research entity, led a multidisciplinary evaluation of the interference between portable wireless telephones and implanted cardiac pacemakers. Supported by the U.S. Food and Drug Administration, WTR recommends to physicians that:

- Pacemaker patients**
 - Should keep wireless telephones at least six inches from the pacemaker.
 - Should NOT place wireless telephones directly over the pacemaker, such as in a breast pocket, when it is turned ON.
 - Should use the wireless telephone at the ear opposite the pacemaker.
- WTR's evaluation did not identify any risk to bystanders with pacemakers from other persons using wireless telephones.
- About cordless telephones**
 - Privacy:** The same features that make a cordless telephone convenient create some limitations. Telephone calls are transmitted between the telephone base and the cordless handset by radio waves, so there is a possibility that the cordless telephone conversations could be intercepted by radio receiving equipment within range of the cordless handset. For this reason, you should not think of cordless telephone conversations as being as private as those on corded telephones.
 - Electrical power:** The telephone base of this cordless telephone must be connected to a working electrical outlet. The electrical outlet should not be controlled by a wall switch. Calls cannot be made from the cordless handset if the telephone base is unplugged, switched off or if the electrical power is interrupted.

WHAT'S IN THE BOX

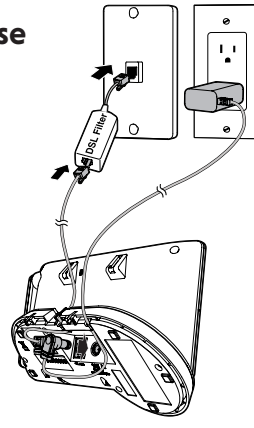


- 1 set for IS8128 | IS8128-11
- 2 sets for IS8128-2 | IS8128-21
- 3 sets for IS8128-3 | IS8128-31
- 4 sets for IS8128-4 | IS8128-41
- 5 sets for IS8128-5 | IS8128-51

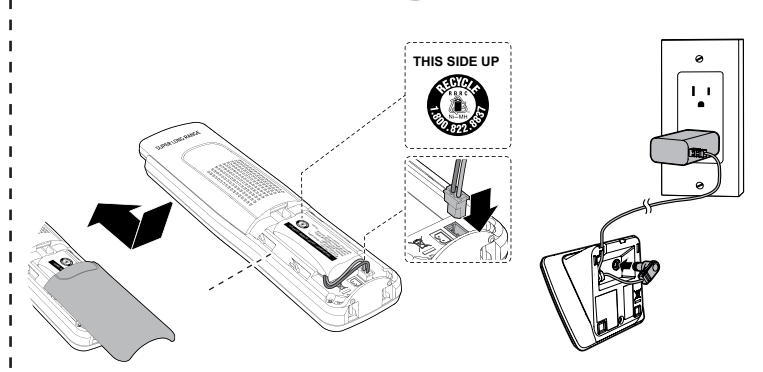
CONNECT AND INSTALL

1 Connect the telephone base

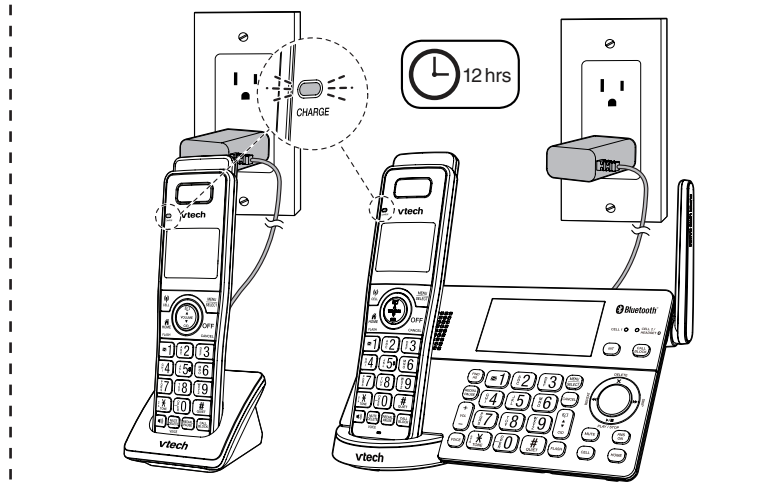
If you subscribe to digital subscriber line (DSL) high-speed Internet service through your telephone line, make sure you connect a DSL filter (not included) to the telephone wall jack.



2 Install the battery 3 Connect the charger



4 Charge the battery



Display

Handset:	Telephone base:
HANDSET 1	BASE
NEW	There are new caller ID log entries.
ANS ON	Answering system is on.
	Handset displays the current message number being played and the total number of new/old messages recorded.
	Telephone base message counter displays the number of new messages.
ECO	The ECO mode activates automatically to reduce power consumption when the handset is within range of the telephone base.

2 SETUP

After you install your telephone or power returns following a power outage and battery depletion, the handset and telephone base will prompt you to set the date and time, and to configure the Smart call blocker™ and answering system through voice guide.

Date and time

Follow the steps below to set the date and time. For example, if the date is 25 July, 2024, and the time is 12:05 PM:

When the handset and telephone base prompt you to set the date and time:

1 Enter the date.

2 Press SELECT.

3 Enter the time.

4 Press SELECT.

5 Press to scroll to Set date/time, then press SELECT.

6 Press to scroll to Set date/time, then press SELECT.

3 Enter the date, then press SELECT. 4 Enter the time, then press SELECT.

Voice guide for Smart call blocker / Answering system

After setting the date and time, the telephone base will prompt if you want to set Smart call blocker, and the answering system. For more details, see **Use voice guide to set Smart call blocker in the Introducing Smart call blocker leaflet and Set up Answering System through voice guide** in the online complete user's manual.

When the telephone base prompts you to set up the Smart call blocker via voice guide:

1 Press on the telephone base to start voice guide setup.

2 Setup your Smart call blocker by inputting the designated numbers as instructed in the voice guide.

This feature assists you to do the basic setup of the answering system. You can follow the voice guide to record your own announcement, set the number of rings and the message alert tone.

When the telephone base prompts you to set up the answering system via voice guide:

1 Press on the telephone base to start voice guide setup.

2 Setup your answering system by inputting the designated numbers as instructed in the voice guide.

*Includes licenced Qaltel™ technology. Qaltel™ is a trademark of Truecall Group Limited.

BLUETOOTH

To use a Bluetooth enabled cellular phone or headset with your telephone, you must first pair and connect your Bluetooth cellular phone or headset with the telephone base. Before you begin, make sure that you have cellular coverage and your Bluetooth enabled cell phone or headset is not connected to any other Bluetooth device.

Add a Bluetooth cell phone

1 Press on the telephone base.

2 Press to scroll to Bluetooth, then press SELECT.

3 Press to select Add cellular.

4 Turn on the Bluetooth feature of your cell phone.

5 Once your cell phone finds your telephone (VTech DECT 6.0), press the appropriate key on your cell phone to continue the pairing process.

Add a Bluetooth headset

1 Press on the telephone base.

2 Press to scroll to Bluetooth, then press SELECT.

3 Press to scroll to Add headset, then press SELECT.

4 Set your headset to discoverable mode.

5 Refer to the user's manual of your Bluetooth headset on how to pair it to your IS8128 telephone.

Download a cell phone directory using the telephone base

Before downloading a directory, make sure the cell phone is paired, active, and connected to your IS8128 telephone.

1 Press on the telephone base.

2 Press to scroll to Bluetooth, then press SELECT.

3 Press to scroll to Download PB.

4 Press to scroll to Download PB, then press SELECT.

5 Press to scroll to Download PB, then press SELECT.

Activate remote voice control

Make sure your cell phone is paired and connected to your telephone system via Bluetooth.

1 Press **VOICE** on the handset.

2 Press **VOICE** on the telephone base.

3 Press **VOICE** on the handset.

4 Press **VOICE** on the telephone base.

5 When the handset or telephone base plays the confirmation tone as forwarded by the cell phone's voice app, start speaking toward the handset or telephone base, and then wait for feedback. Make reply to the voice app's feedback, if necessary.

3 OPERATE

Make a home call

1 Press - OR - - OR - on the telephone base.

2 Enter the phone number.

Make a cell call

1 Press - OR - on the telephone base.

2 Enter the phone number.

Answer a home call

Handset: Press - OR - on the handset.

Telephone base: Press on the telephone base.

End a cell call

Handset: Press **OFF** on the handset.

Telephone base: Press **OFF** on the telephone base.

Answer a cell call

Handset: Press - OR - on the handset.

Telephone base: Press on the telephone base.

Volume

Handset: Press on the handset.

Telephone base: Press on the telephone base.

NEED HELP?

For operations and guides to help you using your telephone system, and for latest information and supports, go and check the online complete user's manual and the online FAQs.

Use your smartphone or mobile device to access our online help.

- Go to <https://help.vtechphones.com/is8128>; OR
- Scan the QR code on the right. Launch the camera app or QR code scanner app on your smartphone or tablet. Hold the device's camera up to the QR code and frame it. Tap the notification to trigger the redirection of the online help.

If the QR code is not clearly displayed, adjust your camera's focus by moving your device closer or further away until it is clear.

You can also call our Customer Support at 1 (800) 595-9511 [in US] or 1 (800) 267-7377 [in Canada] for help.

